

RESULTATS TROUPEAUX MENSUELS

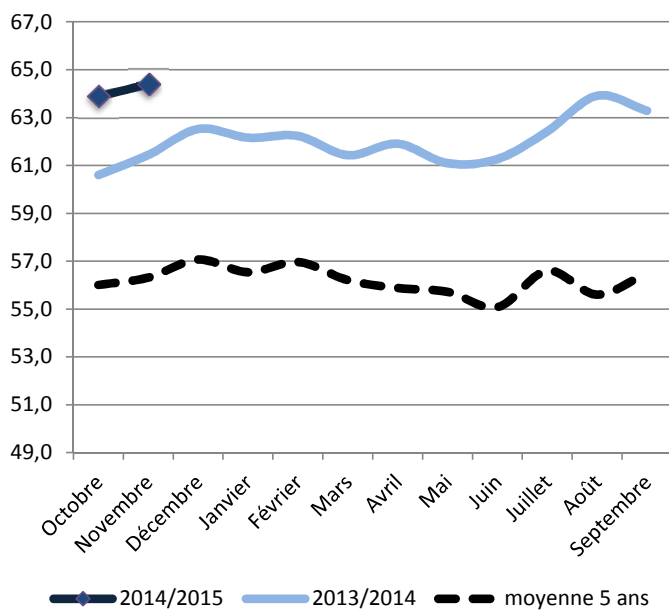
Systemes "Ensilage"

(202 exploitations)

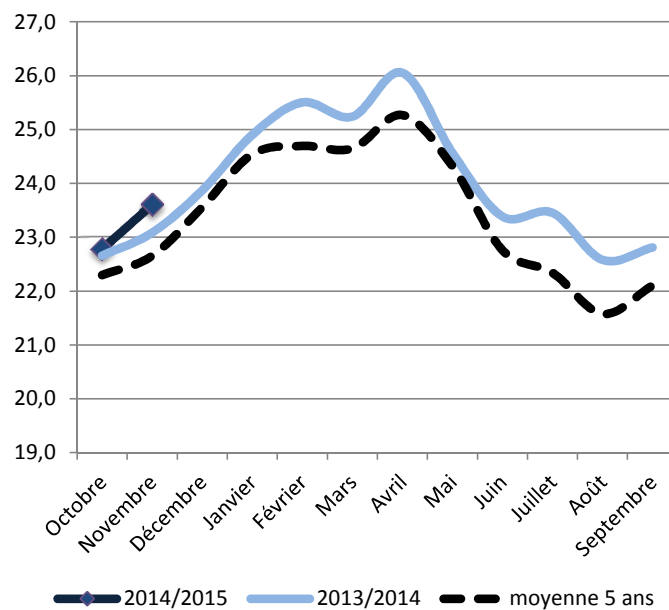
Novembre 2014

Commentaires : Les effectifs de vaches et leur niveau de production augmentent encore en Novembre. L'évolution des consommations de concentré est conforme aux années précédentes. Pour la saison, la valorisation de la ration de base est élevée.

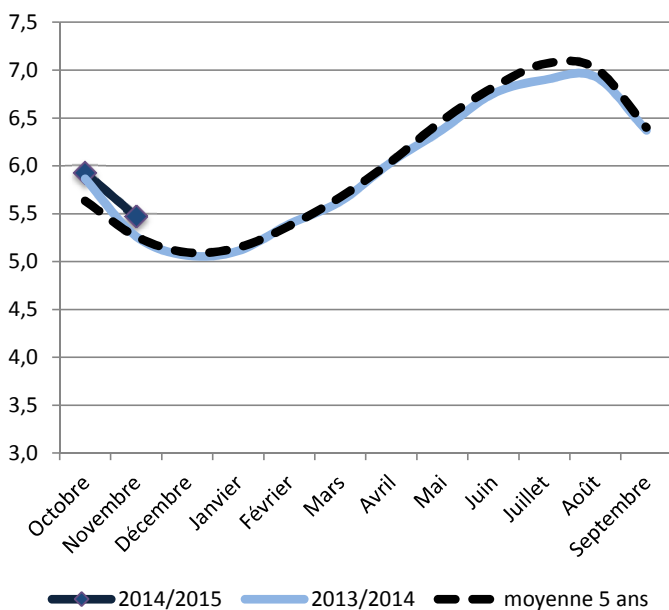
Nombre de VL présentes



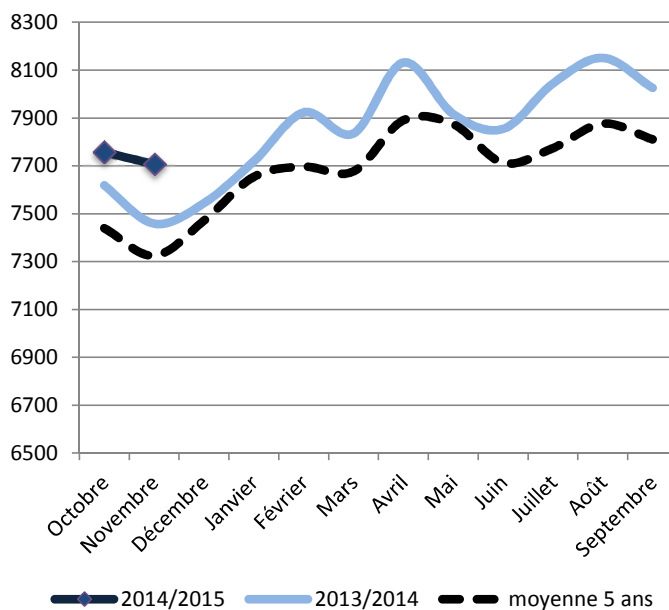
Production laitière (Kg/VL)



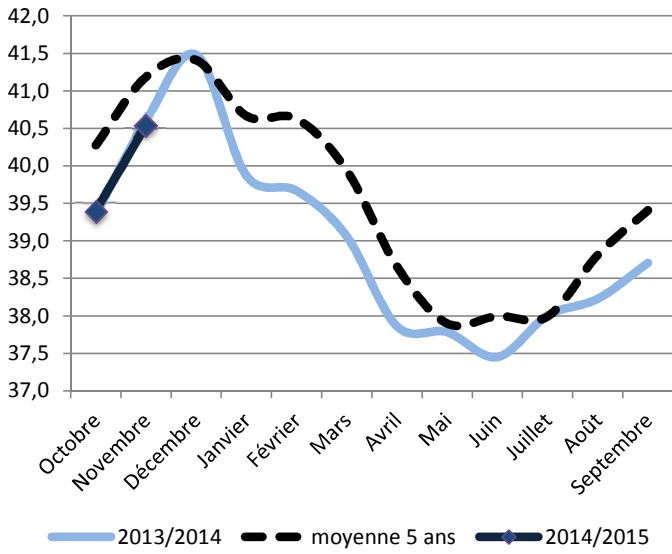
Mois moyen



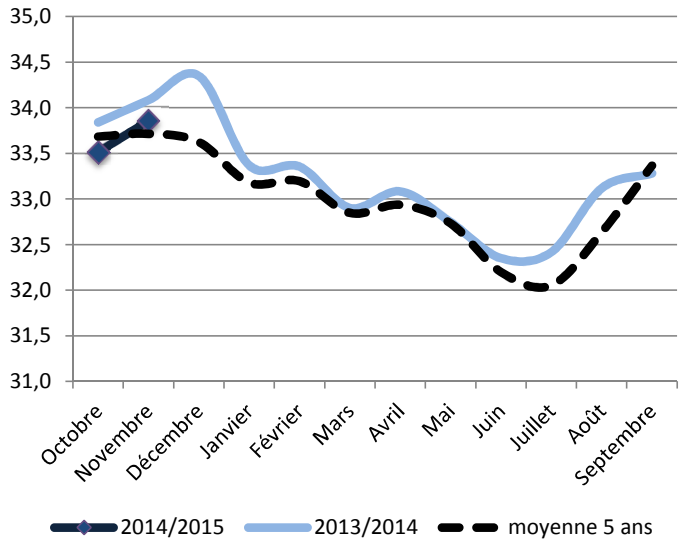
Potentiel brut (Kg/VL/an)



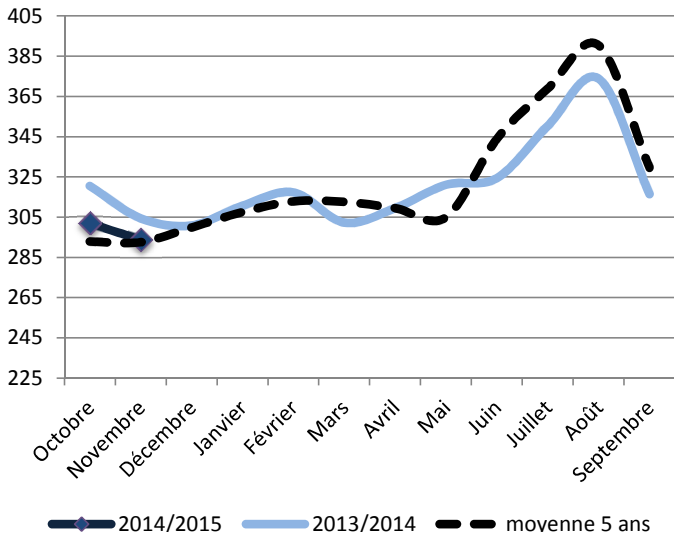
Taux Butyreux (g/Kg)



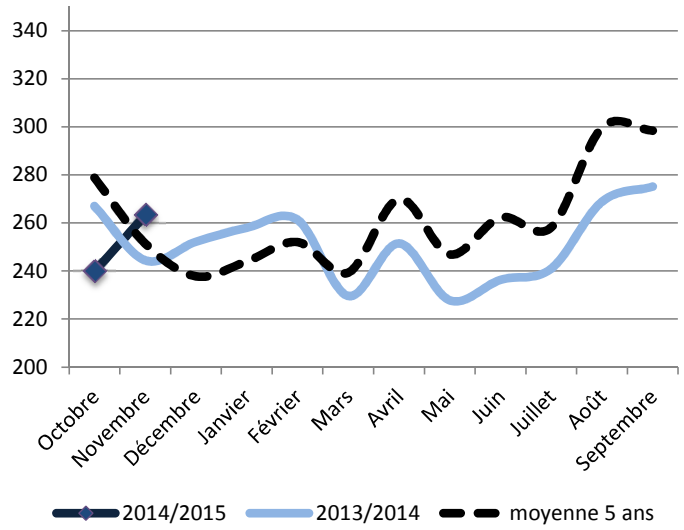
Taux Protéique (g/Kg)



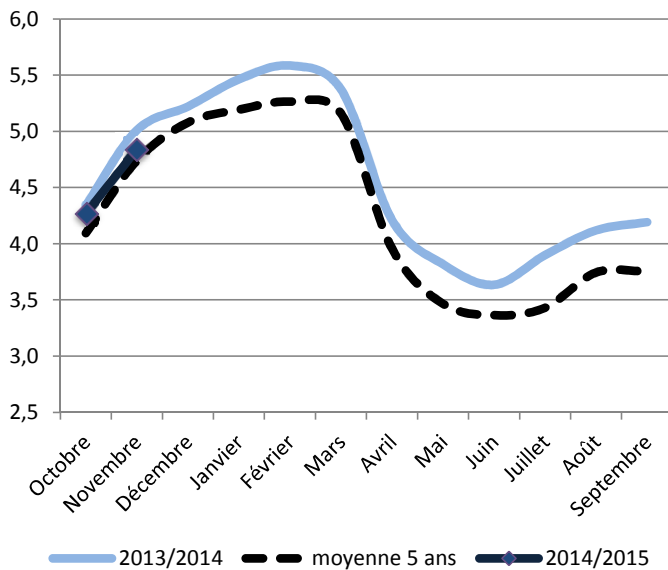
Taux cellulaires (milliers/mL)



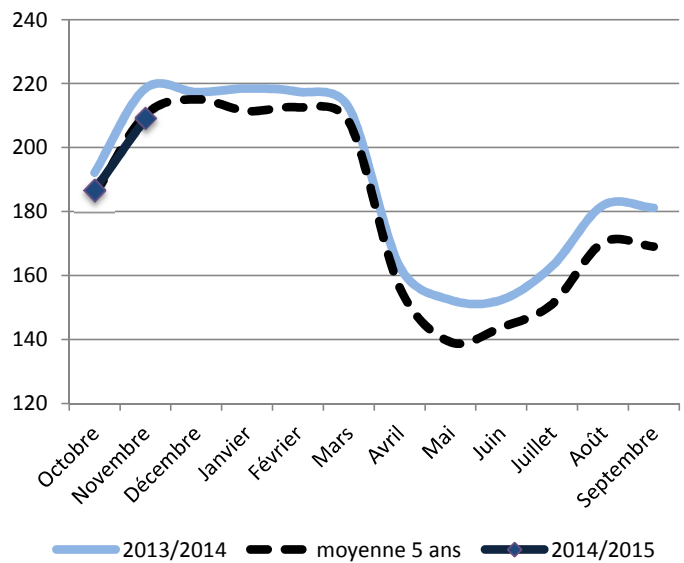
Taux d'urée (mg/Kg)



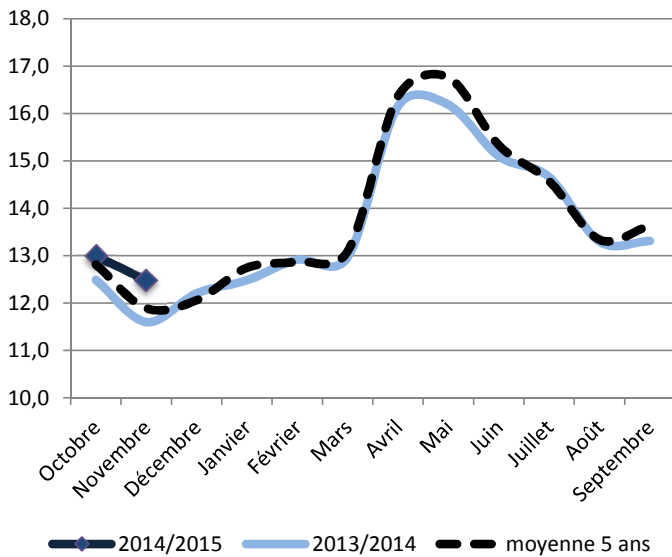
Concentrés (Kg/VL)



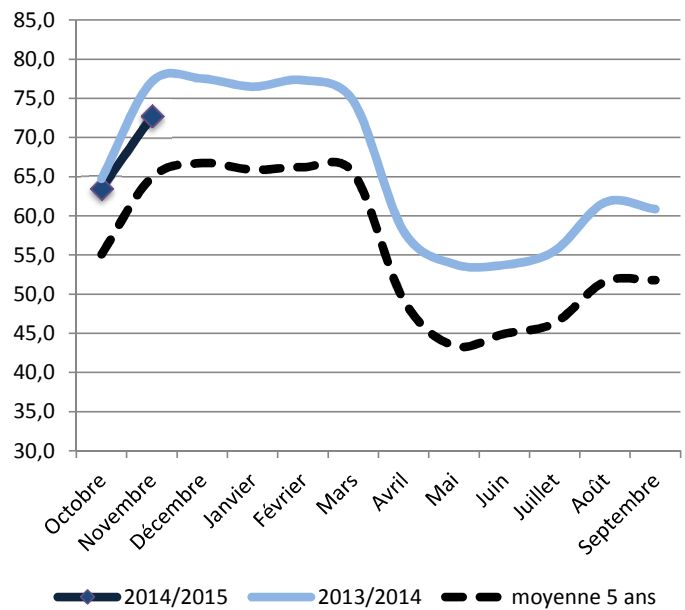
Concentrés (g/Kg de lait)



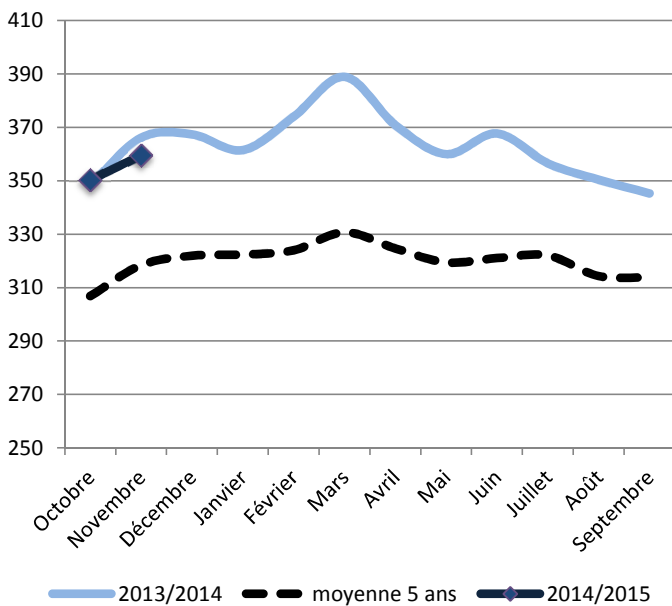
Valorisation de la ration de base (Kg/VL)



Coût HFPE (€/1000L)



Prix des concentrés (€/T)



Coût total de la ration (€/1000L)

